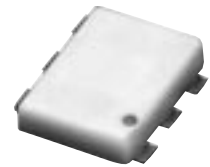


Surface Mount Frequency Mixer

Level 7 (LO Power +7 dBm) 10 to 2000 MHz

NEW!

ADE-11X



CASE STYLE: CD542
PRICE: \$1.99 ea.
QTY.: (100)

Maximum Ratings

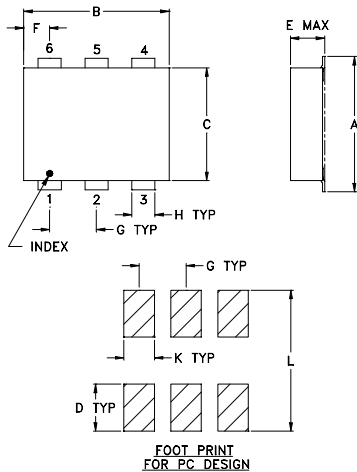
Operating Temperature	-20°C to 85°C
Storage Temperature	-55°C to 100°C
RF Power	50mW
IF Current	40mA

Pin Configuration

LO	6
RF	2
IF	3
GROUND	1,4,5

EVALUATION BOARD P/N: TB-03

Outline Drawing



Outline Dimensions (inch mm)

A	B	C	D	E	F	G	H
.280	.310	.220	.100	.112	.055	.100	.030
7.11	7.87	5.58	2.54	2.84	1.40	2.54	0.76

J	K	L	wt.
—	.065	.300	grams
—	1.65	7.62	.40

Features

- low conversion loss, 7.1 dB typ.
- solder plated leads for excellent solderability
- low profile package, US Patent 6133525
- excellent L-R & L-I isolation, 37 dB typ.

Applications

- cellular
- PCN
- VHF & UHF
- communication receivers & transmitters

Electrical Specifications

FREQUENCY (MHz)	CONVERSION LOSS (dB)	LO-RF ISOLATION (dB)			LO-IF ISOLATION (dB)			IP3@ center band Typ. (dBm)	E FACTOR						
		L	M	U	L	M	U								
10-2000	7.1	62	45	36	20	27	18	60	45	37	20	38	20	9	0.2

1dB Compr.: +1dBm typ.
E = [IP3(dBm) - LO Power(dBm)]/10

Typical Performance Data

Frequency	Conversion Loss	Isolation L-R	Isolation L-I	VSWR LO port	VSWR RF port	
RF MHz	LO MHz	(dB)	(dB)	(:1)	(:1)	
		LO +7dBm	LO +7dBm	LO +7dBm	LO +7dBm	
10.00	40.00	6.87	73.62	65.01	2.77	1.02
50.00	80.00	6.90	69.93	59.35	2.76	1.02
140.00	170.00	6.93	63.73	53.24	2.73	1.04
230.00	260.00	7.04	58.31	49.84	2.73	1.11
320.00	350.00	7.24	54.21	47.45	2.72	1.23
410.00	440.00	7.09	50.96	45.44	2.69	1.36
500.00	530.00	7.24	48.72	43.58	2.69	1.49
680.00	710.00	7.24	44.82	41.32	2.77	1.69
770.00	800.00	7.53	42.44	40.43	2.96	1.81
860.00	890.00	7.40	41.32	38.95	3.16	1.94
950.00	980.00	7.22	40.30	37.29	3.32	1.92
1000.00	1030.00	7.15	38.88	37.56	3.26	1.92
1100.00	1130.00	7.14	36.34	37.42	3.41	1.80
1200.00	1230.00	7.10	36.27	36.68	3.58	1.88
1400.00	1430.00	7.25	36.93	36.27	3.57	1.83
1500.00	1530.00	7.34	37.21	36.40	3.66	1.74
1600.00	1630.00	7.62	38.29	35.12	3.74	1.66
1800.00	1830.00	7.38	31.09	37.16	3.40	1.58
1900.00	1930.00	7.38	30.89	36.72	3.49	1.54
2000.00	2030.00	7.51	31.33	36.37	3.69	1.51

